

Hazardous Weather Briefing

Winter Weather Warnings

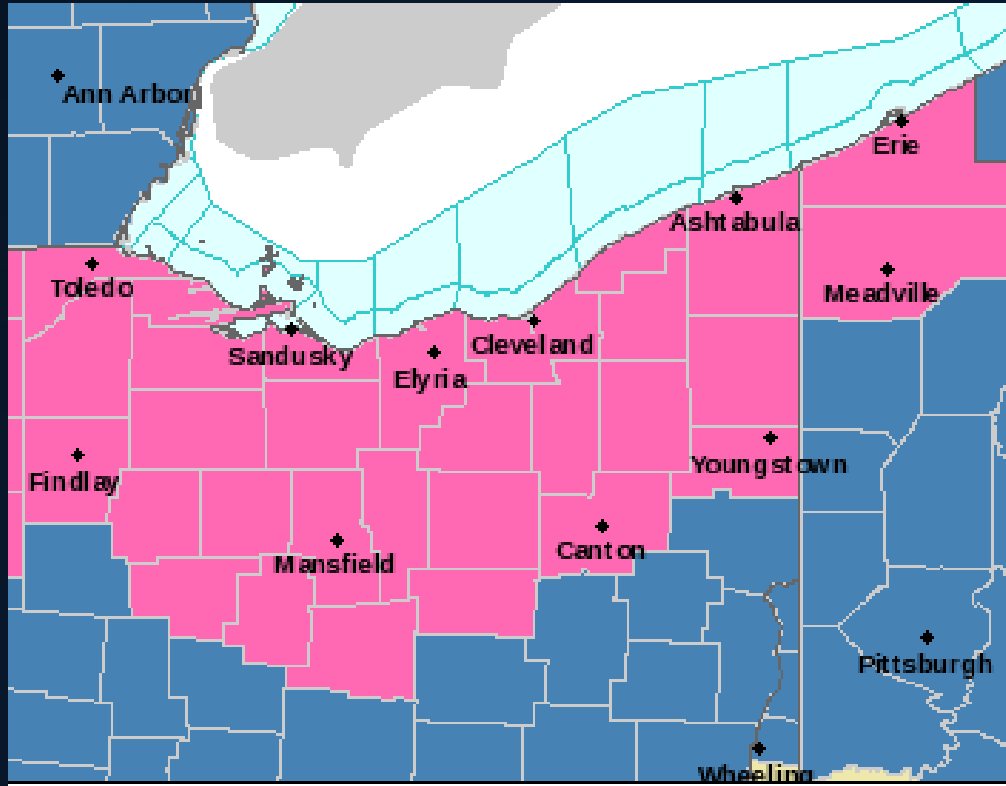
Sunday, February 1, 2015

**National Weather Service
Cleveland Ohio**

Presenter: Sarah Jamison

230 pm Saturday Jan 31, 2015

1 AM Sunday to Noon Monday



<http://www.weather.gov/cle/>

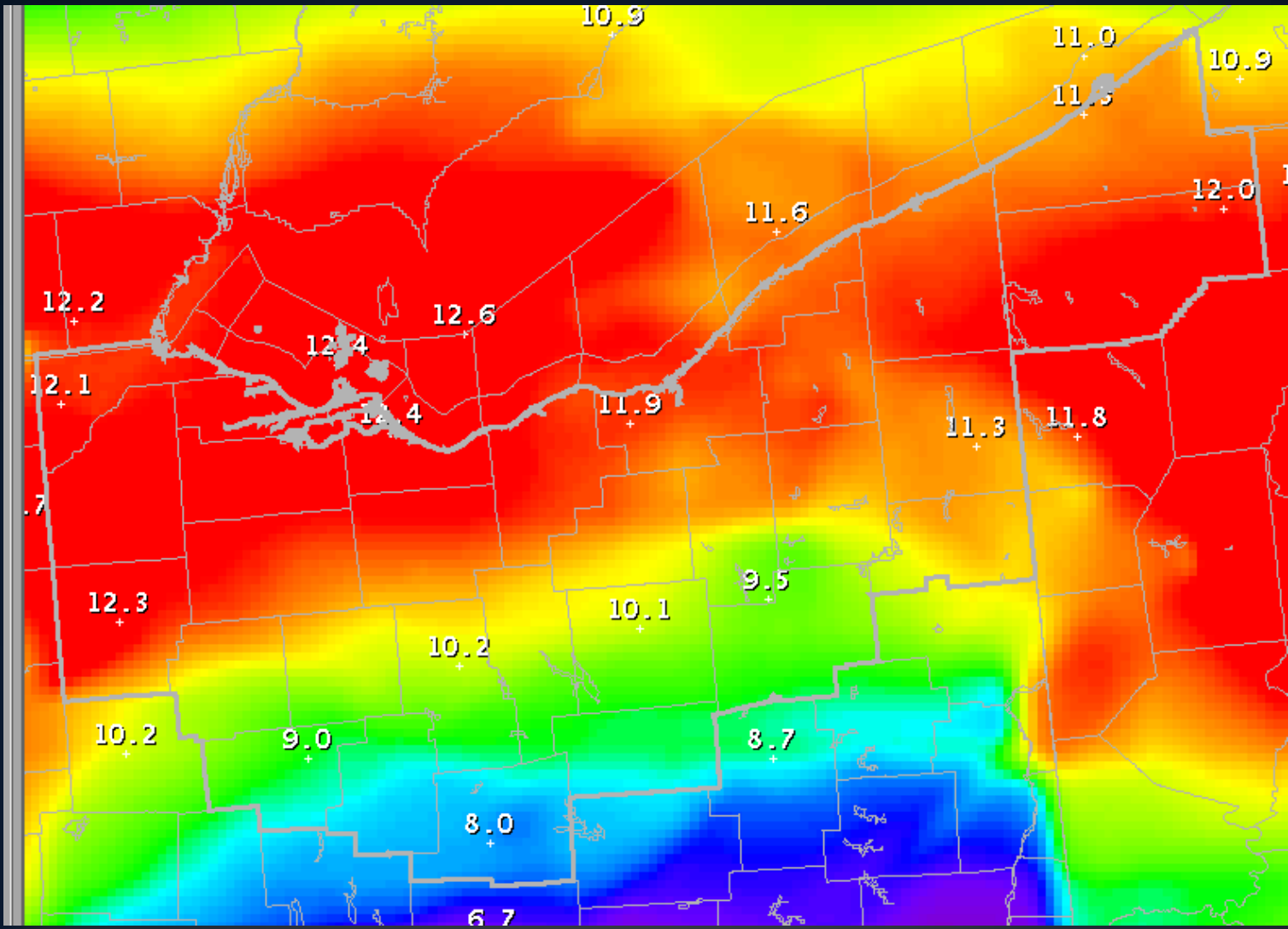
**Forecast
Uncertainty-
Medium to
High
confidence of
a high impact
event.**

Current Watch/Warnings/Advisories

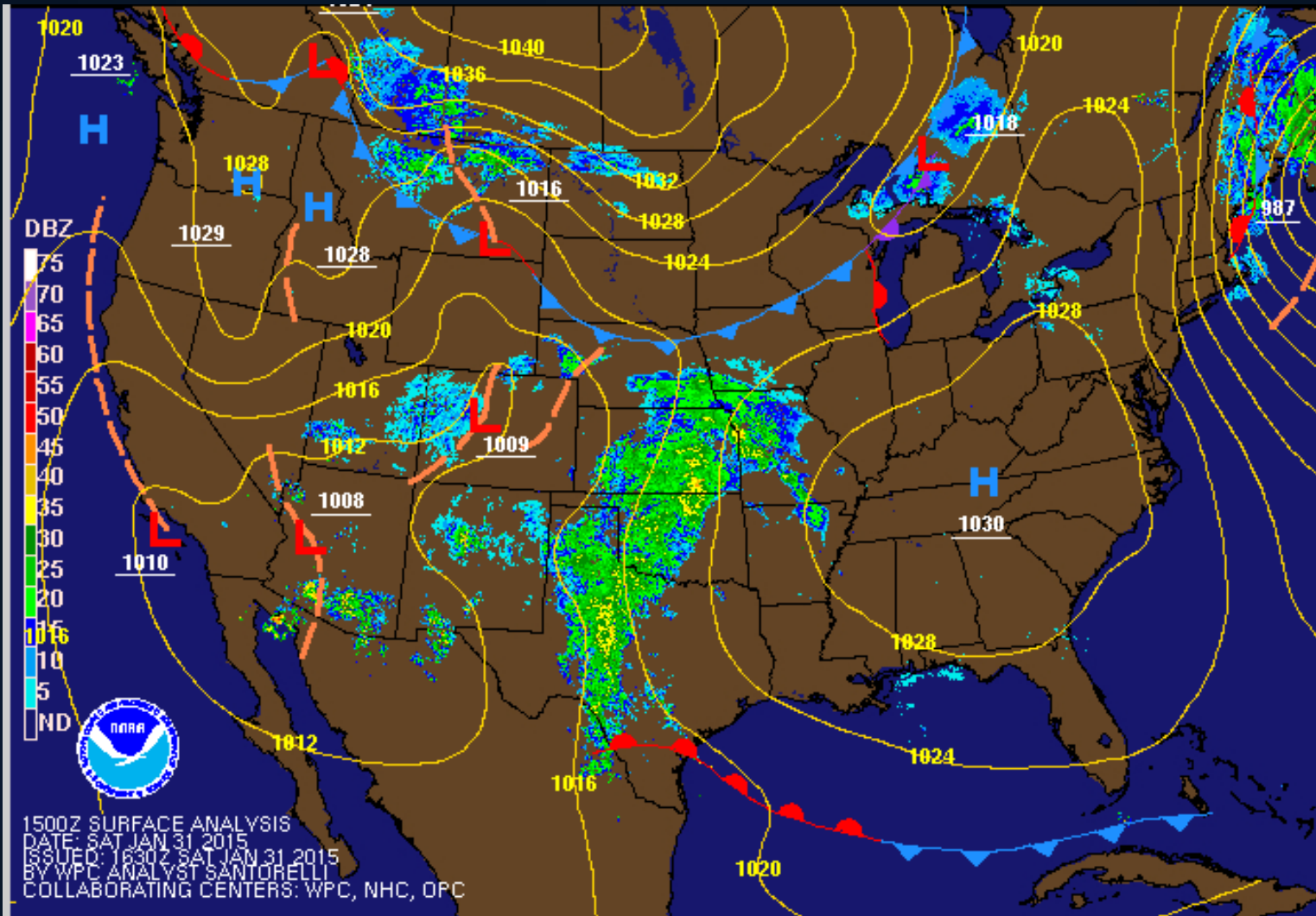
Heavy Snow to Blanket the Region

- **Threat-** Heavy snow forecasted for Sunday into Monday Morning. A few hours of freezing rain and sleet possible from Marion to Youngstown (south) Sunday Night.
- **Location-** Entire region forecasted to see 8" or greater
- **Snow Beginning-** Snow starts after midnight in the west and it will spread east by 4 am.
- **Snow Ending-** Snow will end Monday morning as the storm pulls away to the east.

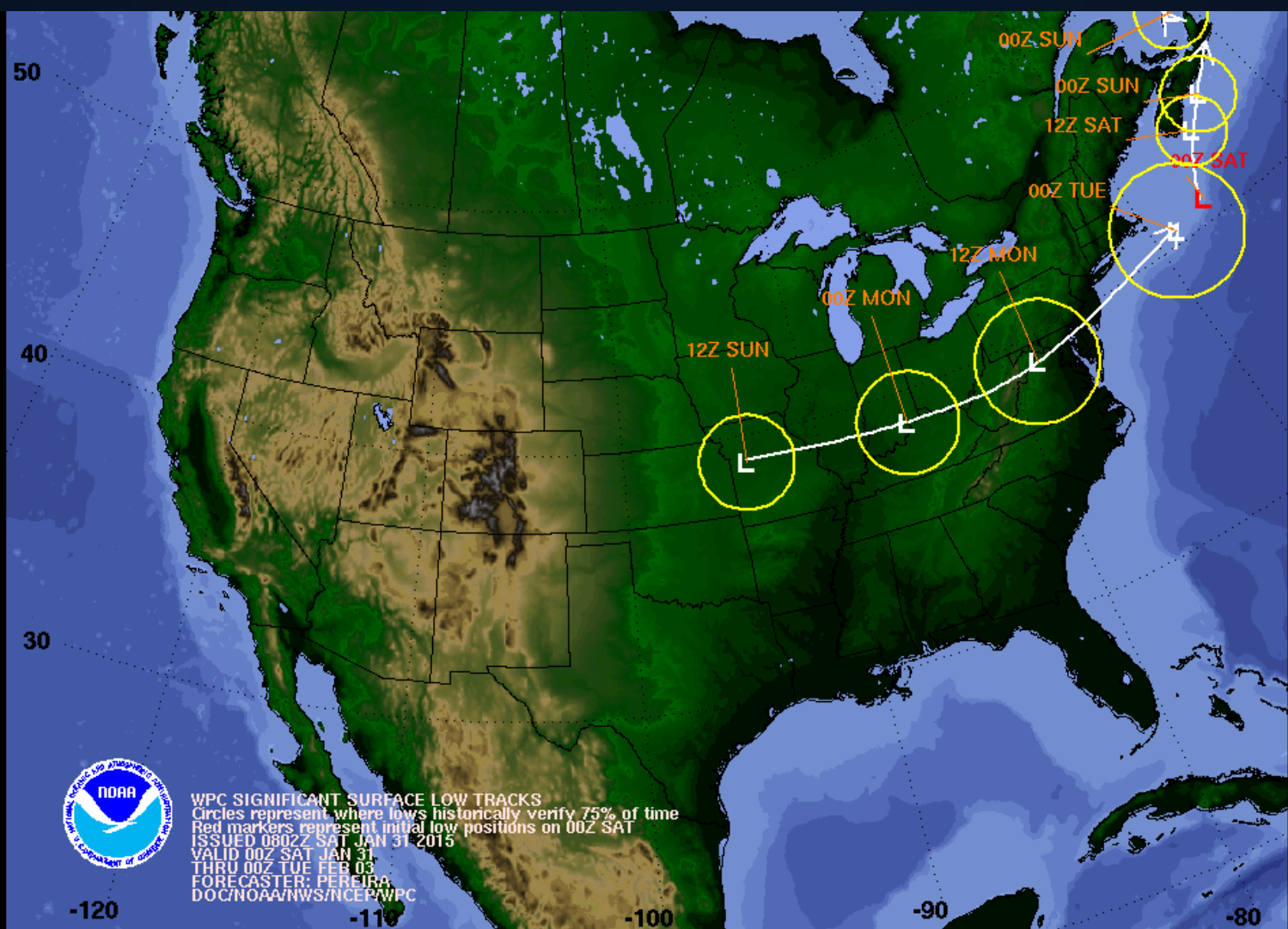
General Overview



Latest Storm Total Snowfall Forecast

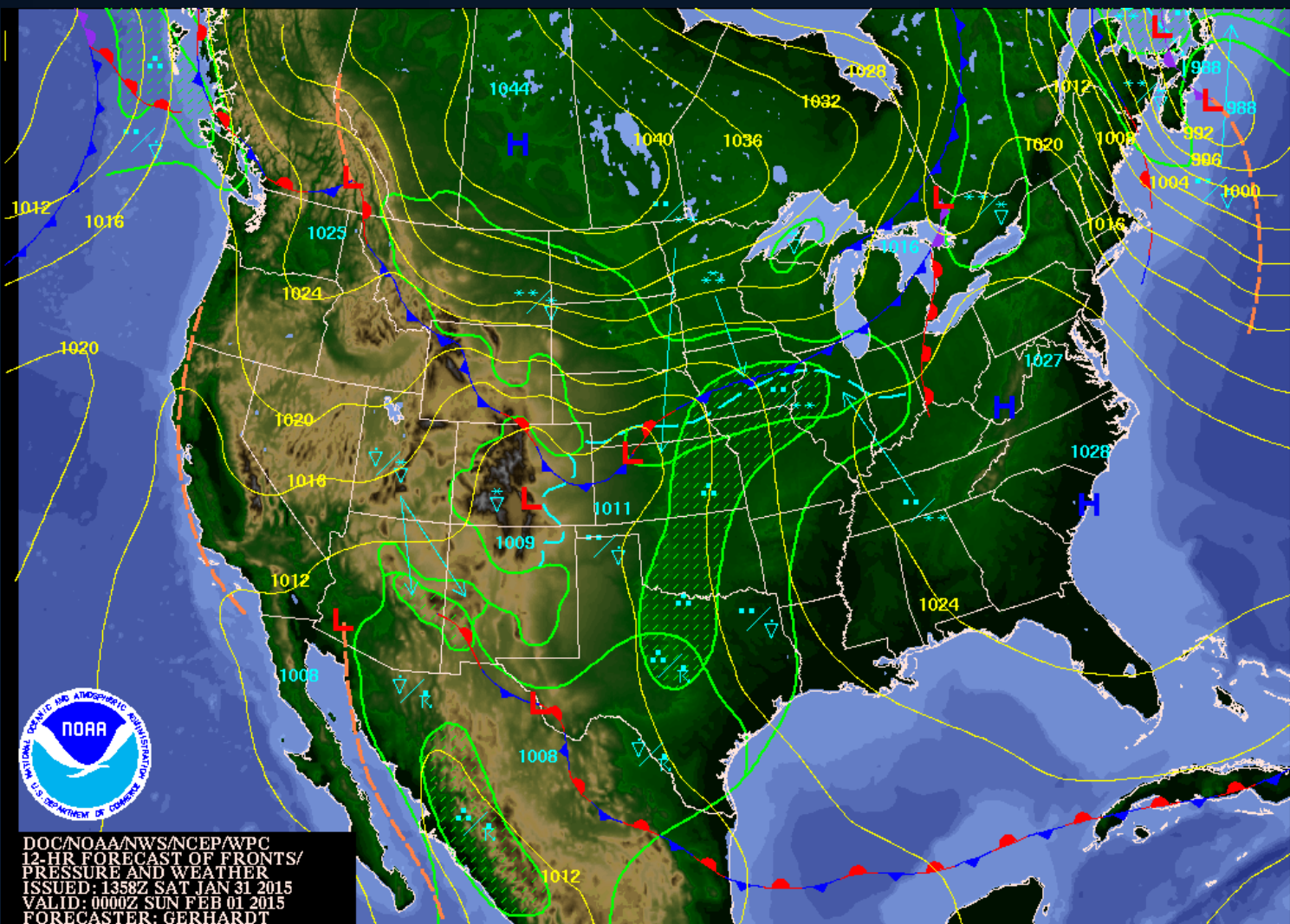


Current Conditions



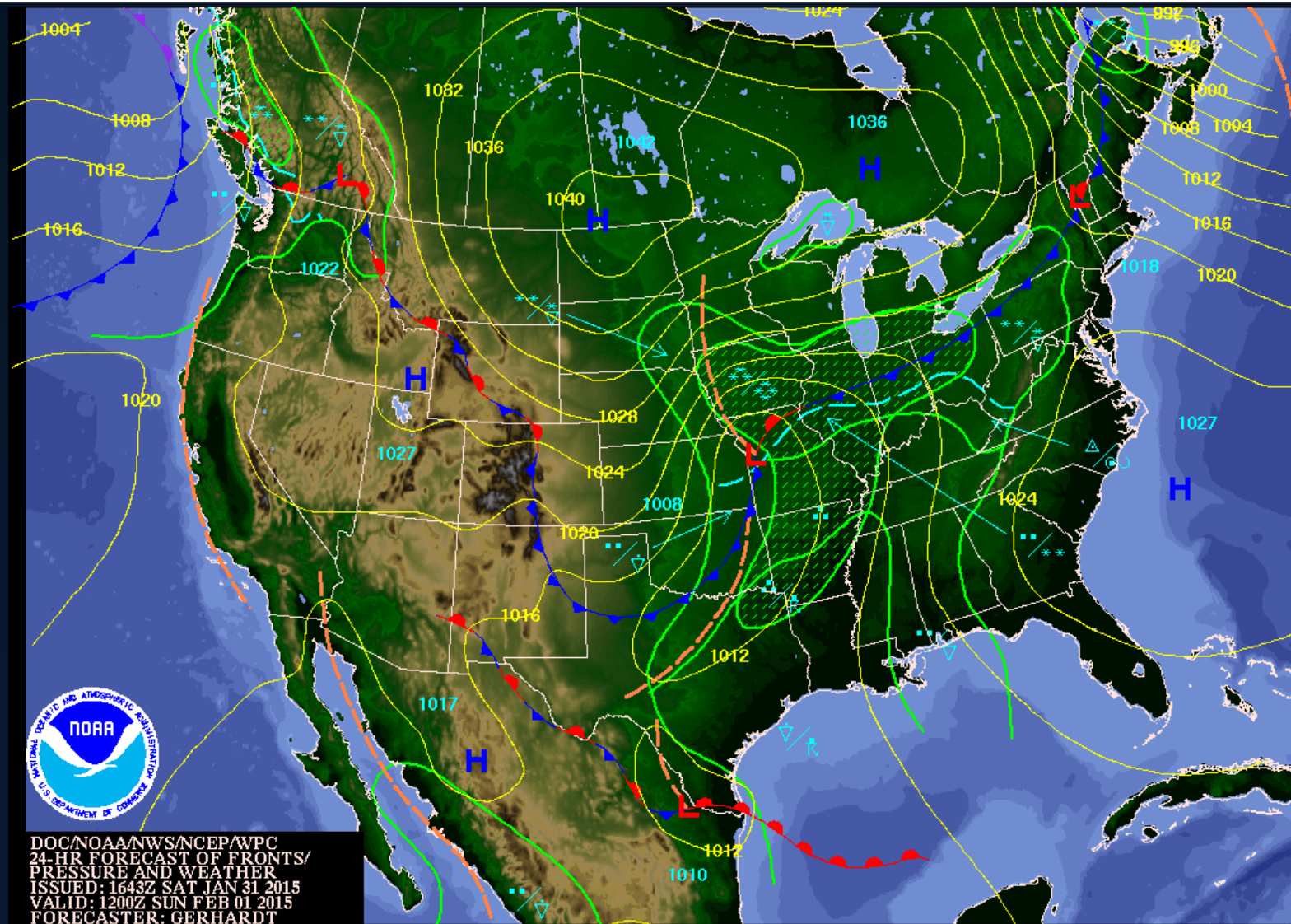
WPC SIGNIFICANT SURFACE LOW TRACKS
 Circles represent where lows historically verify 75% of time
 Red markers represent initial low positions on 00Z SAT
 ISSUED 0802Z SAT JAN 31 2015
 VALID 00Z SAT JAN 31
 THRU 00Z TUE FEB 03
 FORECASTER: PEREIRA
 DOC/NOAA/NWS/NCEP/WPC

Storm System Track

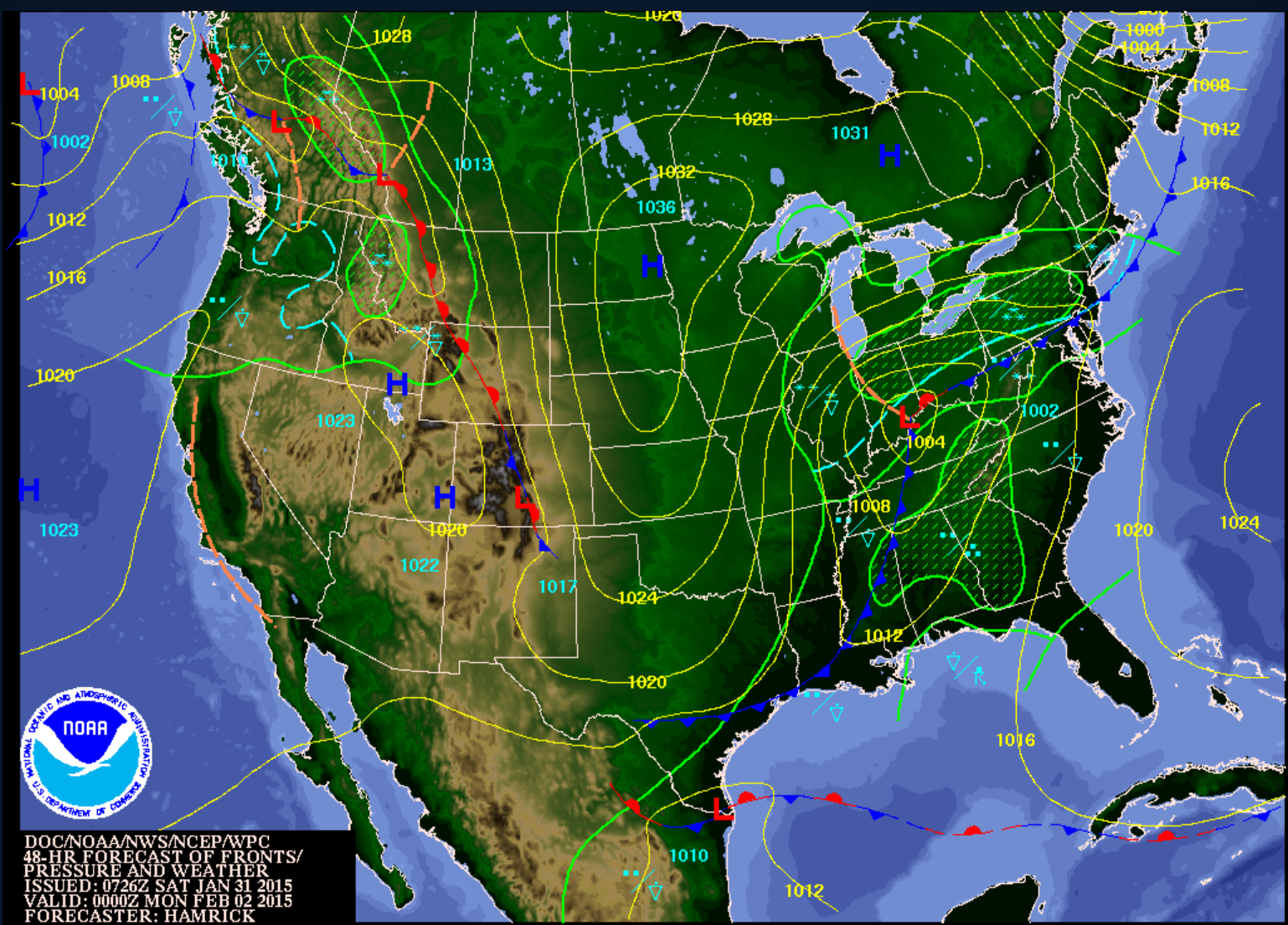


DOC/NOAA/NWS/NCEP/WPC
 12-HR FORECAST OF FRONTS/
 PRESSURE AND WEATHER
 ISSUED: 1358Z SAT JAN 31 2015
 VALID: 0000Z SUN FEB 01 2015
 FORECASTER: GERHARDT

7 PM Tonight

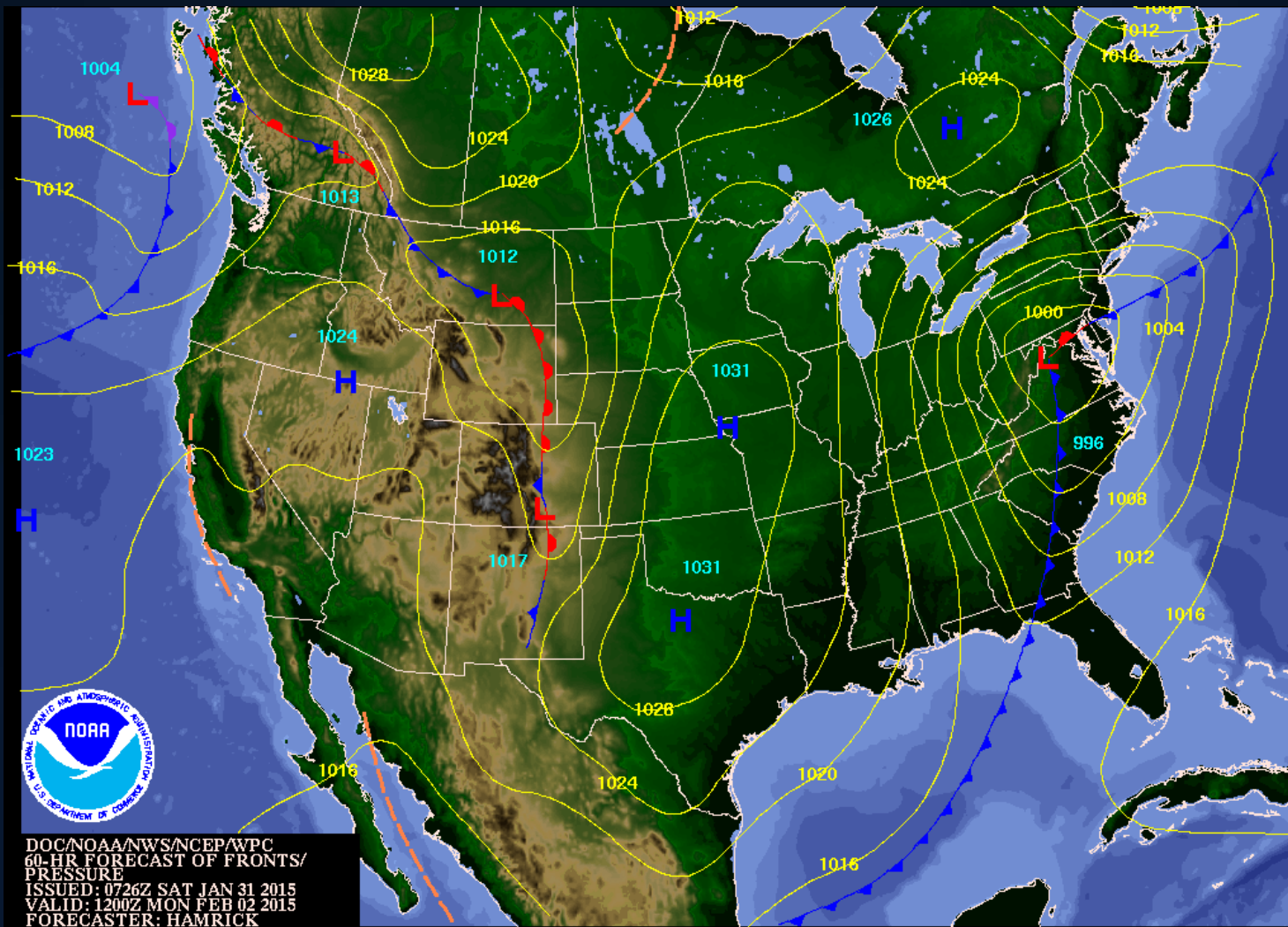


7 AM Sunday



DOC/NOAA/NWS/NCEP/WPC
48-HR FORECAST OF FRONTS/
PRESSURE AND WEATHER
ISSUED: 0726Z SAT JAN 31 2015
VALID: 0000Z MON FEB 02 2015
FORECASTER: HAMRICK

7 PM Sunday



7 AM Monday

- **NW OH and Lake Erie**

Lakeshore- NE winds 10 -15 mph through early afternoon. Becoming N 20 gust 32 mph late afternoon and Sunday Night.

- **NE OH and NW PA-** ENE winds 10 -15 mph through Sunday evening. Becoming NE 15 gust 25 mph Sunday Night.

Winds

Whiteout Conditions



- **Special Threats or Hazards-** Winds approaching Blizzard Conditions in NW OH and along the Lake Erie Lakeshore Late Sunday Afternoon through Sunday Night.

Special Considerations

- Snow tapering to snow showers everywhere before noon, scattered snow showers NE OH and NW PA lingering in the afternoon.
- Snowbelt could accumulate 2 inches, elsewhere an inch or less through Monday afternoon.
- Temperatures in the lower teens
- Winds NW 10-15 mph
- Wind chills around -10F
- Monday Night temperatures 0 to -4F, wind chills -10 to -15F

Monday and Monday Night

Questions?

Please contact the
National Weather Service in Cleveland
if you need additional assistance.

216-265-2370

800-262-9683

Reference Pages

NWS Cleveland: www.weather.gov/cle

Weather Prediction Center: www.hpc.ncep.noaa.gov/

Ohio River Forecast Center: www.weather.gov/ohrfc/